

# LUXORliving D1

Item no.: 4800570

theben

Smart Home  
Flush-mounted actuators

## Description

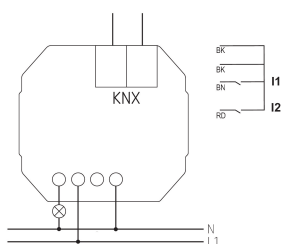
- 1-way flush-mounted dimming actuator LUXORliving
- Optimised dimming output for dimmable energy-saving lamps, LEDs, incandescent and halogen lamps, and dimmable transformers
- Easy to adapt to different lamps thanks to automatic load detection
- Adjustable dimming curve for precise and flicker-free dimming
- 2 binary inputs for floating contacts such as buttons, switches, temperature sensor (I2)
- The binary inputs are assigned to the dimming output as standard (function test before programming)
- Integrated temperature monitoring for increased operating safety, e.g. in the event of overload
- Download of the installation software LUXORplug at <https://luxorliving.de/luxorplug>

## Technical data

| LUXORliving D1                 |                          |
|--------------------------------|--------------------------|
| Operating voltage KNX          | Bus voltage, $\leq 4$ mA |
| Installation type              | Flush-mounted            |
| Number of channels             | 1                        |
| Incandescent/halogen lamp load | 250 W                    |
| LED lamp < 2 W                 | 250 W                    |

| LUXORliving D1      |               |
|---------------------|---------------|
| LED lamp 2-8 W      | 250 W         |
| LED lamp > 8 W      | 250 W         |
| Ambient temperature | -5°C ... 45°C |

## Connection example



Subject to technical changes and misprints

additional information at: [www.theben.de/product/4800570](http://www.theben.de/product/4800570)

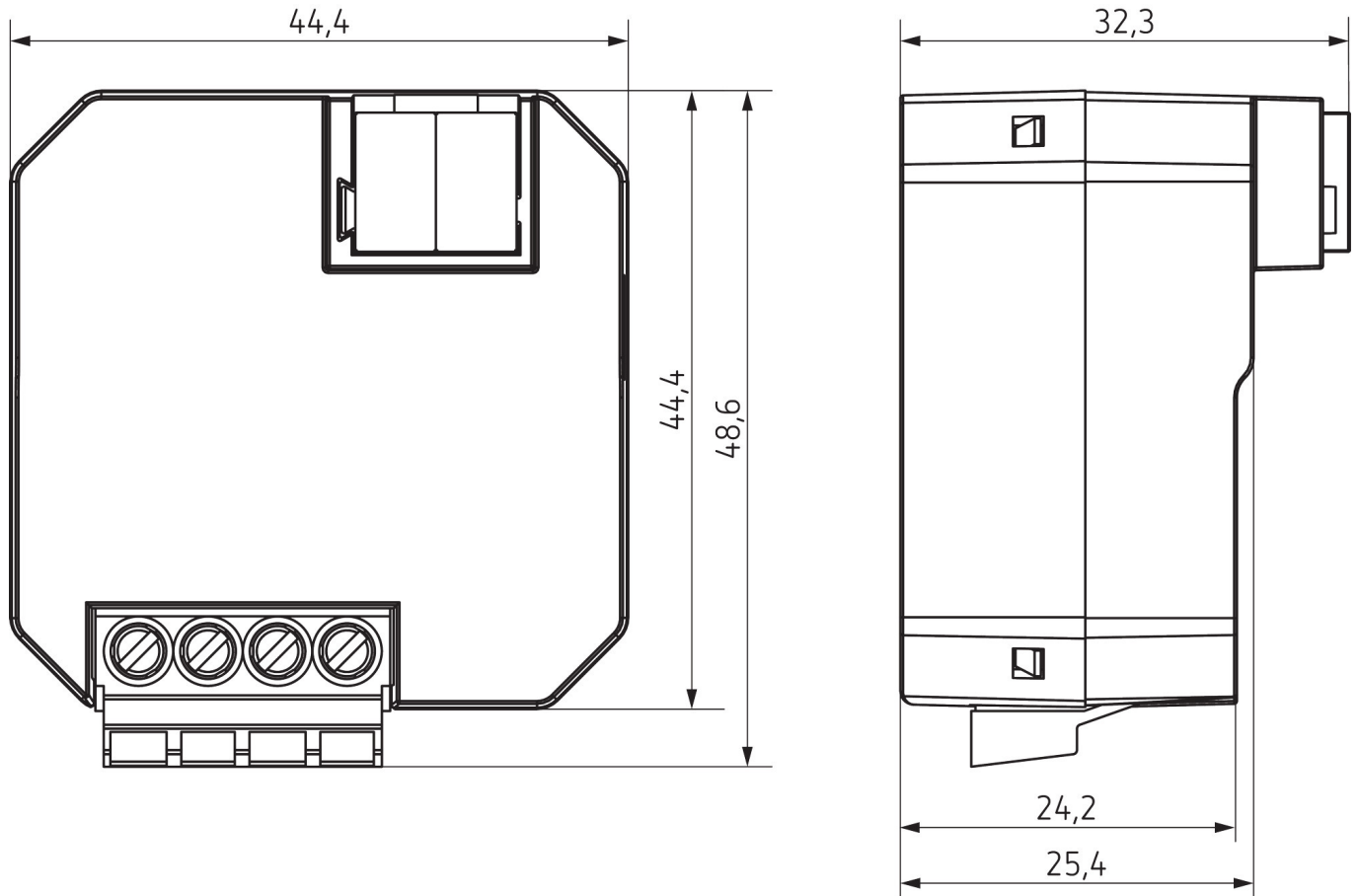
The load data are determined with exemplary selected illuminants and are therefore typical data due to the large number of available products.

# LUXORliving D1

Item no.: 4800570

**theben**

## Scale drawings

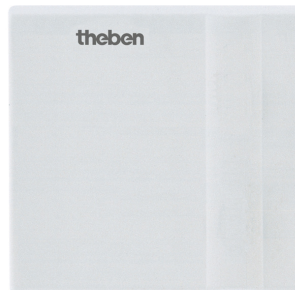


## Accessories

Temperature sensor  
Item no.: 9070321



Temperature sensor RAMSES IP  
65  
Item no.: 9070459



Flush-mounted temperature  
sensor  
Item no.: 9070496



Subject to technical changes and misprints  
additional information at: [www.theben.de/product/4800570](http://www.theben.de/product/4800570)

The load data are determined with exemplary selected illuminants and are therefore typical data due to the large number of available products.