

# theMura S180 KNX UP WH

Item no.: 2069650



## KNX

### Presence and motion detectors

#### Description

- Passive infrared motion detector for wall mounting flush-mounted, Data Secure
- Rectangular detection area 170°, 14 x 17 m (238 m<sup>2</sup>) at 1.2 m mounting height
- For KNX bus system
- 1 channel light and 1 channel presence for HVAC control
- 3 logic channels (AND, OR, XOR)
- KNX Data-Secure
- Operation as fully or semi-automatic possible
- Integrated, freely parameterisable push-button (can be deactivated)
- Manual override via external KNX push-button possible
- One directional brightness measurement (mixed light measurement)
- Teach-in function
- Locking functions
- HVAC channel without brightness influence
- Switch-on delay and follow-up time of HVAC channel adjustable
- Extension of the detection range by master/slave or master/master switching
- Detection sensitivity adjustable
- Test mode for checking function and detection range
- Settings via ETS software (full range of functions)
- With Theben cover frame



#### Technical data

theMura S180 KNX UP WH	
Detection angle	170°
Type of connection	KNX bus terminal
Installation type	Wall installation, Flush-mounted
Light switch-off delay	30 s - 60 min
Light measurement	Mixed light measurement

theMura S180 KNX UP WH	
Ambient temperature	-15°C ... 45°C
Detection range	238 m <sup>2</sup> (14 x 17 m)
Colour	White
Type of protection	IP 20

#### Detection range for planning applications at a temperature of 21 °C

Montagehöhe (A)	Frontal gehend (R)	Quer gehend (t)	Sitzend (S)
1,2 m	120 m <sup>2</sup>   12 m x 10 m	238 m <sup>2</sup>   14 m x 17 m	

Subject to technical changes and misprints

additional information at: [www.theben.de/product/2069650](http://www.theben.de/product/2069650)

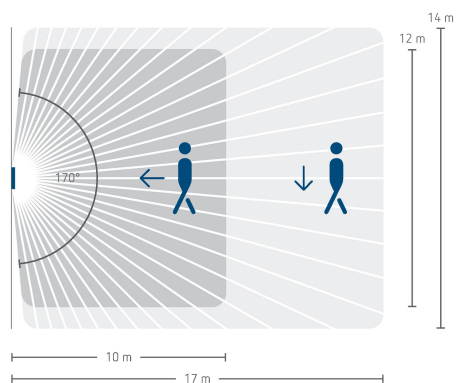
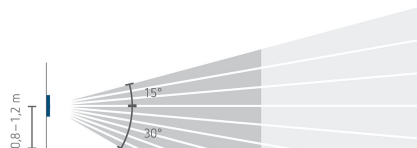
The load data are determined with exemplary selected illuminants and are therefore typical data due to the large number of available products.

# theMura S180 KNX UP WH

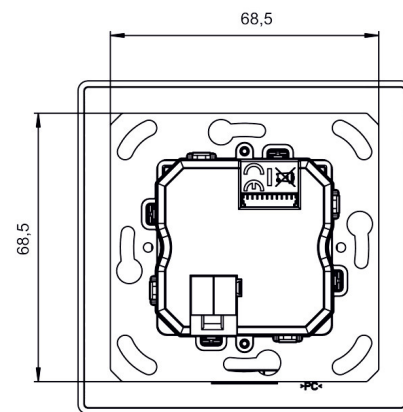
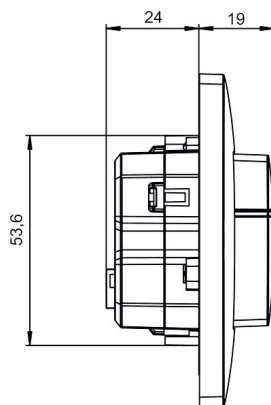
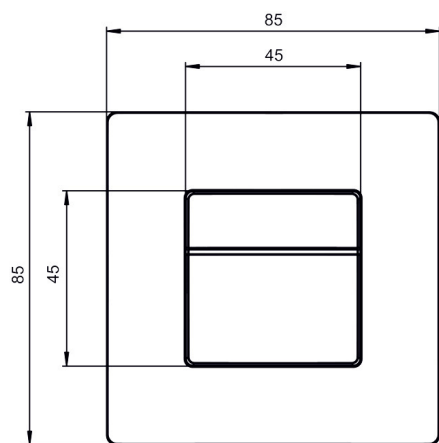
Item no.: 2069650



Detection range for planning applications at a temperature of 21 °C



## Scale drawings



Subject to technical changes and misprints

additional information at: [www.theben.de/product/2069650](http://www.theben.de/product/2069650)

The load data are determined with exemplary selected illuminants and are therefore typical data due to the large number of available products.

# theMura S180 KNX UP WH

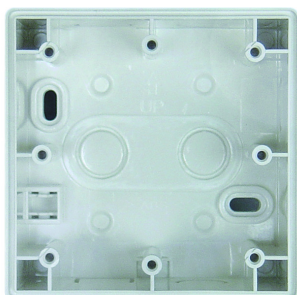
Item no.: 2069650



## Accessories

Surface frame LUXA 103-200

Item no.: 9070504



Adapter frame 45A BJBSI WH

Item no.: 9070788



Adapter frame 45A MMP WH

Item no.: 9070790



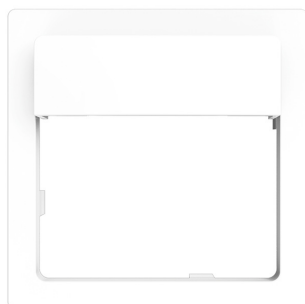
Adapter frame 45A GS WH

Item no.: 9070791



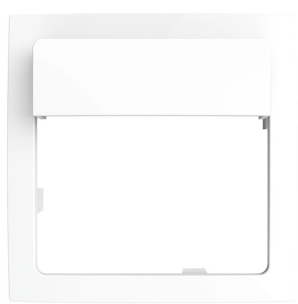
Adapter frame 45A JAS WH

Item no.: 9070789



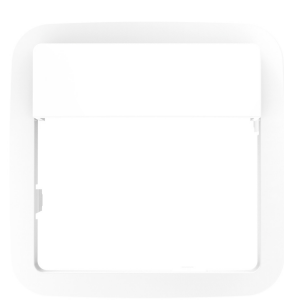
Adapter frame 45A BS WH

Item no.: 9070792



Adapter frame 45A BJRE WH

Item no.: 9070754



Adapter frame 45A MEMP CL

Item no.: 9080004



Adapter frame 45A GIST CL

Item no.: 9080005



Adapter frame 45A BESI CL

Item no.: 9080006



Adapter frame 45A BJBA CL

Item no.: 9080002



Adapter frame 45A JUAS CL

Item no.: 9080003



Subject to technical changes and misprints

additional information at: [www.theben.de/product/2069650](http://www.theben.de/product/2069650)

The load data are determined with exemplary selected illuminants and are therefore typical data due to the large number of available products.

22/06/2026

Page 3 of 4

# theMura S180 KNX UP WH

Item no.: 2069650



## Accessories

---

**Adapter frame 45A BJRE CL**

Item no.: 9080001



**Adapter frame 45A FEED CL**

Item no.: 9080007

