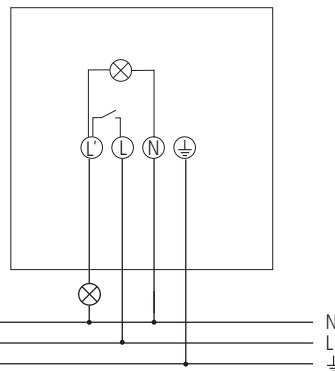


EN LED spotlight with motion detector

theLeda E30 WH 1020915
theLeda E30 BK 1020916



1. Basic safety information



WARNING

Danger of death through electric shock or fire!

- Installation should only be carried out by a qualified electrician!

- The LED spotlight with motion detector (PIR) conforms to EN 60598-1 if correctly installed
- Only intended for installation outside of arm's reach

Proper use

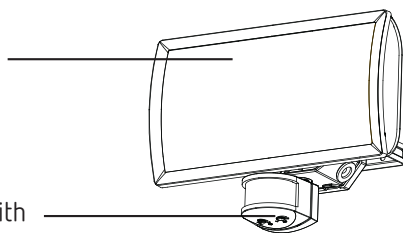
- LED spotlight is used for lighting, depending on presence and brightness
- Intended for wall mounting outdoors
- Suitable for corridors, gardens, entrances, parks etc.
- For use in normal ambient conditions

Disposal

Dispose of LED spotlight in an environmentally sound manner (electronic waste)

2. Description

LED spotlight



Sensor head with 2 potentiometers for setting time (min.) and brightness (lux)

3. Connection

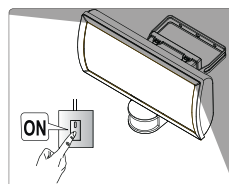
WARNING

Danger of death through electric shock!

- Disconnect power source
- Ensure device cannot be switched on
- Check absence of voltage
- Earth and bypass
- Cover or shield any adjacent live components

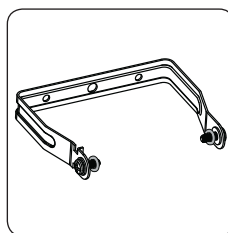


- Do not touch the metal parts. The device can get hot.

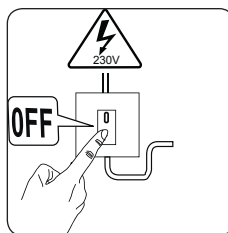


4. Installation

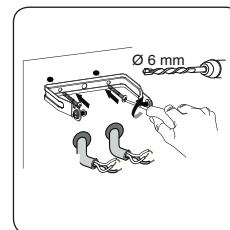
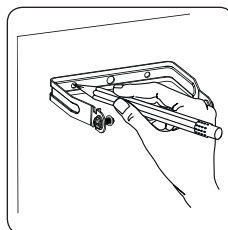
- Ensure installation height of 2.5 m



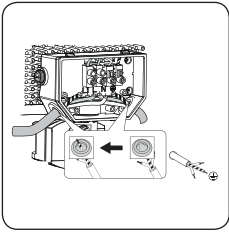
- Use the accompanying mounting bar for flexible installation and cable entry



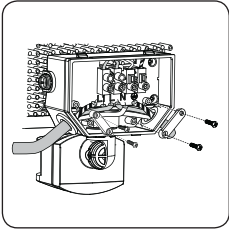
- Disconnect power source



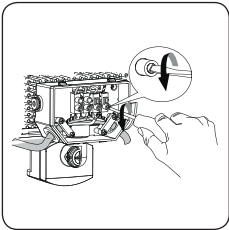
- Make marks for the holes and drill the holes
- Tighten the mounting bar



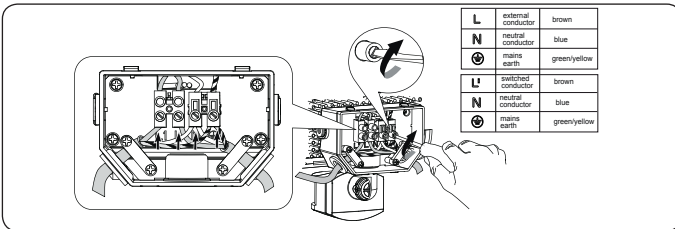
➤ Feed cable through the seal of the base



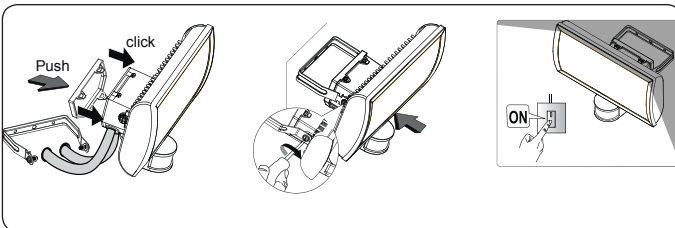
➤ Fix cord grip and tighten screws



➤ Connect the individual wires to the appropriate terminal



➤ Tighten screws

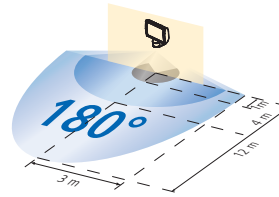
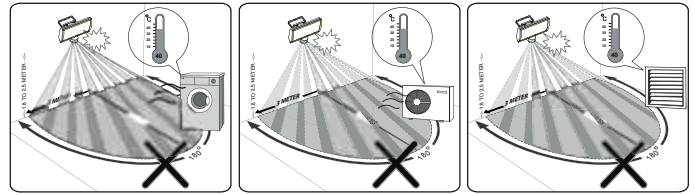


- Place and engage the cover on the LED spotlight
- Place the LED spotlight on the mounting bar and tighten screws
- Connect LED spotlight to mains

Installation instructions

As the LED spotlight reacts to variations in temperature, avoid the following situations:

- Do not direct motion detectors (PIR) of the LED spotlight at objects with highly-reflective surfaces, such as mirrors etc.
- Do not install the motion detector near heat sources, such as heating outlets, air conditioning systems, lamps etc.
- Do not direct the motion detector at objects that move in the wind, such as curtains, large plants etc.
- Pay attention to the direction of motion during the test run.



- Transverse detection area: 12 m (transversal to the detector)
- Frontal detection area: 4 m (directly approaching the detector)
- Detection angle: 180 °

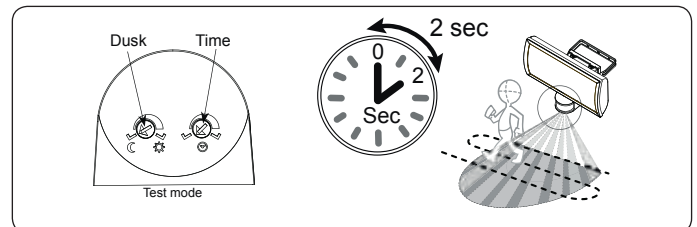
5. Walking test

The walking test is used to test the detection area and to restrict it if necessary.

➤ Turn the time potentiometer (min.) counterclockwise up to the stop.

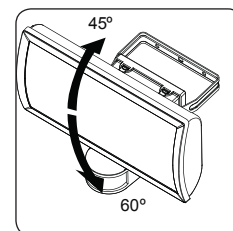
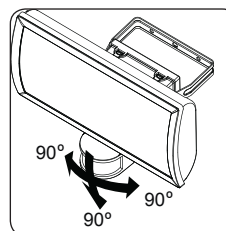
The motion detector now only reacts to movements (independent of brightness).

- Go diagonally to the detection area. After the motion detector has detected a movement, it switches on for 2 s.
- Pay attention to the direction of motion during the test.



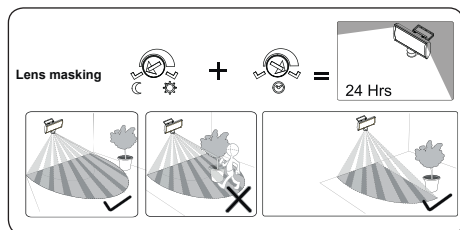
6. Alignment

- The sensor can be rotated to left/right and down by 90 °.
- The LED spotlight can be rotated up by 45 ° and down by 60 °.



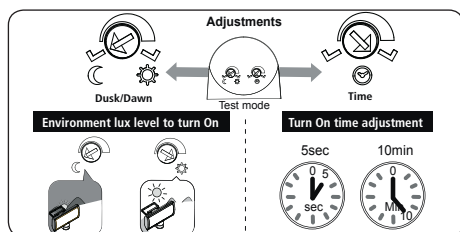
Limiting the detection area - using stickers

- Use the supplied stickers to adjust the motion detector to the desired detection area.
- Remove the required section of the sticker by using scissors.
- Then place on the lens.



7. Setting

The LED spotlight has 2 potentiometers for setting the time (min.) and brightness (lux).



Setting the brightness (lux)

- Turn the potentiometer to „Moon“; the LED spotlight only switches on when it is relatively dark.



- Turn the potentiometer to „Sun“; the LED spotlight switches on when it is relatively bright.



- Turn the potentiometer to „Sun“, and the device works independent of brightness.



Setting the time (min.)

- Set the potentiometer to the desired time (5 s - 10 min.).

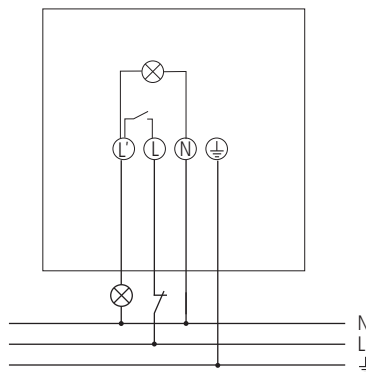


Manual operation

The lighting can be manually switched on/off via a circuit breaker button.

- ① The surrounding brightness must be below the set value!

- ① A circuit breaker button must be connected.



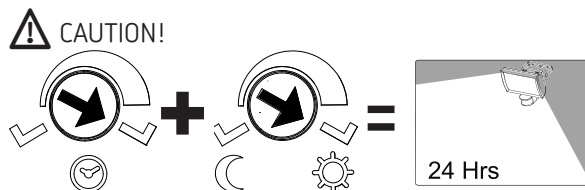
- Shortly press the circuit breaker button (max. 1.5 seconds)
→ The lighting remains switched on, until the surrounding brightness exceeds the set value.
- In order to switch off the lighting, shortly press the circuit breaker button (max. 1.5 seconds).

Setting the twilight switch function

- Turn the time potentiometer (min.) clockwise up to the stop.
→ The twilight switch function is activated.

- ① Now, the motion detector does not respond to movements anymore.

- ① The connected spotlight switches on at the set surrounding brightness



8. Technical data

- Operating voltage: 230 V AC +/- 10 %, 50–60 Hz
- Consumption with light ON: 30 W
- Standby output: max. 0.5 W
- LED output (luminous flux):
 - theLeda E30 WH: 30 W (2310 lm)
 - theLeda E30 BK: 30 W (2115 lm)
- Protection rating: IP 55 in accordance with EN 60598-1
- Protection class: I in accordance with EN 60598-1
- Operating temperature: –20 °C ... +40 °C
- Brightness setting range: 2 – 200 lx
- Duty cycle range: 5 s – 10 min.
- Detection area: transverse: max. 12 m, frontal: max. 4 m; 180 °
- Installation height: 2.5 m
- Sensor head can be rotated right/left, down by: 90 °, 90 °
- Spotlight can be rotated up by: 45 ° and down by: 60 °

- Energy efficiency class: A+ (theLeda BK: A)
- Switching contact: μ -contact
- Max. switching capacity: 1000 W; 4.3 A (at $\cos \varphi = 1$)
- Min. switching capacity: 10 mA/230 V
- Incandescent and halogen
lamp load: 1000 W
- Fluorescent lamps (LLB low-loss ballasts):
uncompensated/series
compensated: 1000 VA,
parallel compensated: 350 W
(37 μ F)
- Fluorescent lamps (EB – electronic ballasts):
300 W
- Compact fluorescent lamps (EB): 80 W
- LED lamps < 2 W: 15 W
- LED lamps > 2 – 8 W: 50 W
- LED lamps > 8 W: 50 W

9. Contact

Theben AG

Hohenbergstraße 32
72401 Haigerloch
GERMANY
Phone: +49 7474 692-0
Fax: +49 7474 692-150

Hotline

Phone: +49 7474 692-369
hotline@theben.de
www.theben.de