

theben

top2 GPS power unit for top2 RC GPS antenna

907 0 892



310 341

Installing top2 GPS power unit

- The top2 GPS power unit is designed to be installed on DIN top hat rails (in accordance with EN 60715).
- Strong interference fields can cause faults.

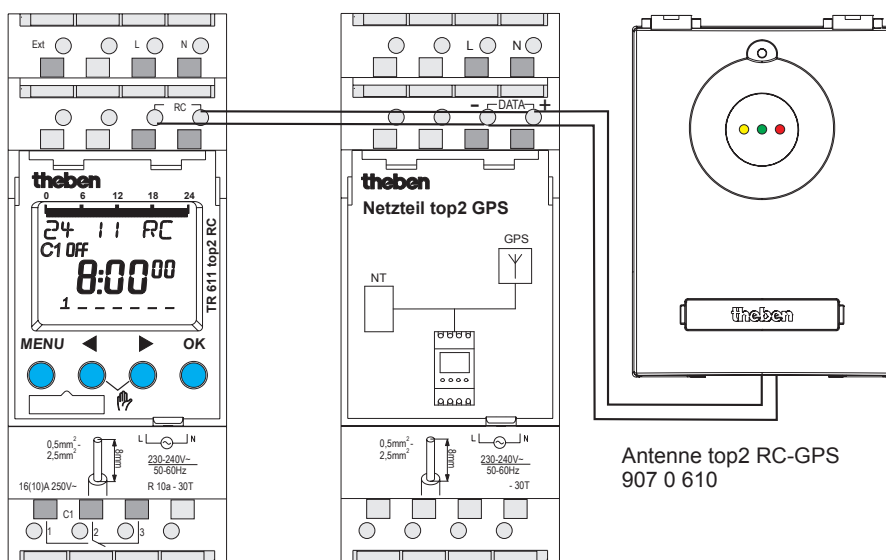


- Do not install top2 GPS power unit close to inductive consumers.
- Lay separate mains connection.
- Shield inductive consumer.

Designated use

The top2 GPS power unit is used to provide additional power to the top2 GPS antenna. The power unit is only used with TR 611 top2 RC, LUNA 121 top2 RC, LUNA 122 top2 RC or SELE-KTA 171 top2 RC devices (the power unit is not required with more than 1 device).

Connect top2 GPS power unit



- Use 2-wire antenna cable with a maximum length of 100 m.

Safety advice



WARNING

Danger of death through electric shock or fire!

- Installation should only be carried out by a qualified electrician!

Technical data

- Operating voltage: 230–240 V~, +10 %/-15 %
- Frequency: 50–60 Hz
- Power consumption: typically 3 VA
- DATA bus: Bus voltage: 15 V DC, low voltage in protection class II (SELV)
- Permissible ambient temperature: –30 °C ... +55 °C
- Protection class: II in accordance with EN 60730-1 subject to designated installation
- Protection rating: IP 20 in accordance with EN 60529
- Power supply at DATA bus: 50 mA (maximum current at DATA bus: 500 mA)

Service address

Theben AG
Hohenbergstr. 32
72401 Haigerloch
GERMANY
Telephone +49 (0) 74 74 6 92 0
Fax +49 (0) 74 74/6 92-150

Hotline

Telephone +49 (0) 74 74 6 92 -369
Fax +49 (0) 74 74/6 92-207
hotline@theben.de
Addresses, telephone numbers etc.
www.theben.de