

theben

EN Motion detector

theLuxa E180 WH

1010205

theLuxa E180 BK

1010206

307155 03



1. Basic safety information



WARNING

Danger of death through electric shock or fire!

➤ Installation should only be carried out by a qualified electrician!

- The device conforms with EN 60669-2-1 if correctly installed
- IP 55 in accordance with EN 60529

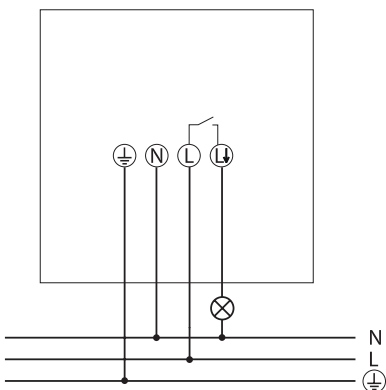
2. Proper use

- Motion detector for automatic lighting control dependent on presence and brightness
- Suitable for wall mounting outdoors
- Suitable for entrances, garages, gardens, corridors, parks, etc.
- Only intended for installation outside of arm's reach

Disposal

- Dispose of device in environmentally sound manner.

3. Connection

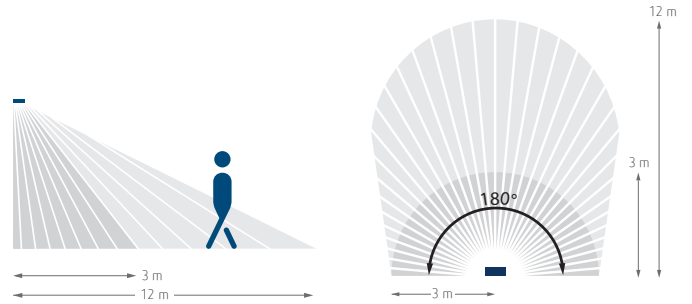


- Disconnect power source.
- Ensure device cannot be switched on.
- Check absence of voltage.
- Earth and bypass.
- Cover or shield any adjacent live components.

4. Installation

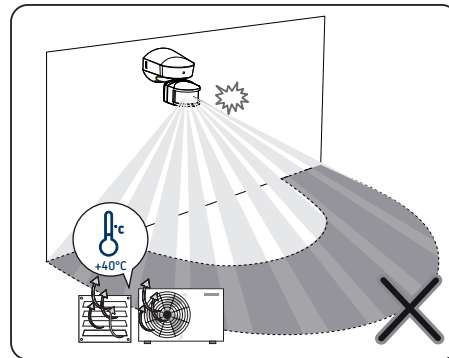
Installation instructions

- ① Observe the recommended installation height of 2.5 m!

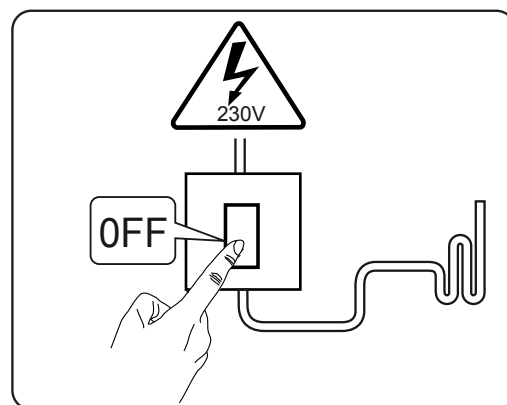


As the detector reacts to variations in temperature, avoid the following situations:

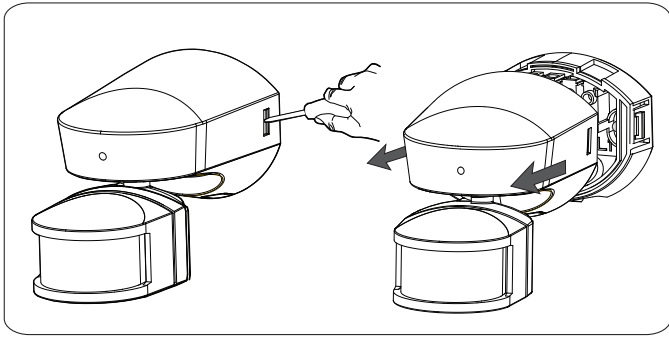
- Do not direct motion detectors at objects with highly-reflective surfaces such as mirrors, etc.
- Do not install the motion detector near heat sources, such as heating outlets, air conditioning systems, lamps, etc.
- Do not direct the motion detector at objects that move in the wind, such as curtains, large plants, etc.
- Pay attention to the direction of motion during the test run.



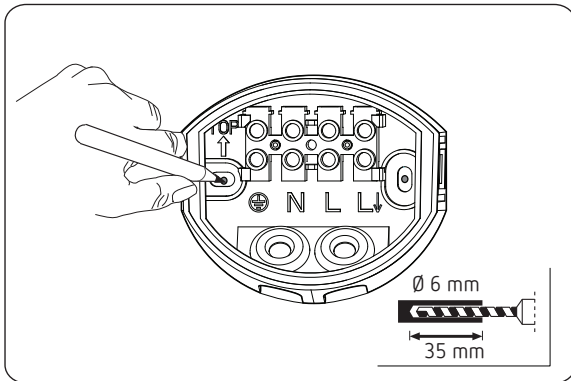
- Disconnect power source.



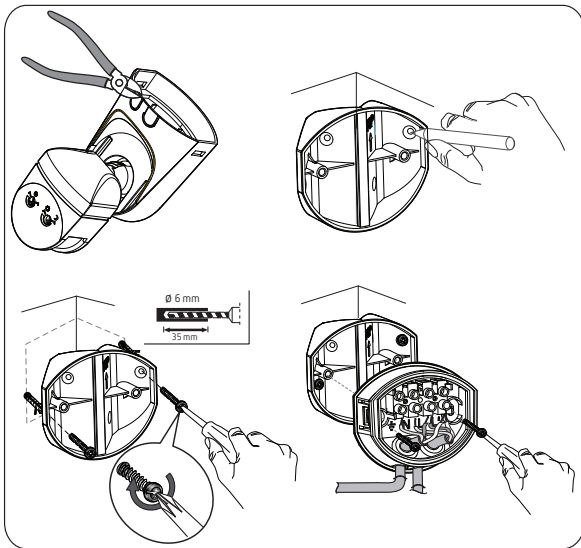
- Loosen catch mechanisms with a screwdriver and remove motion detector from base.



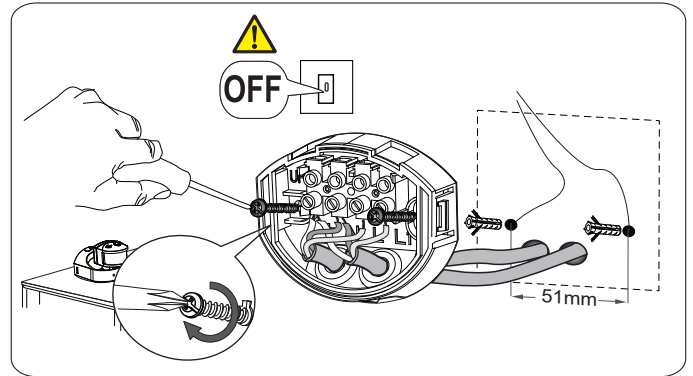
- Make marks for the holes and drill the holes.
- If necessary, use the optional corner bracket (9070974 WH), (9070975 BK).



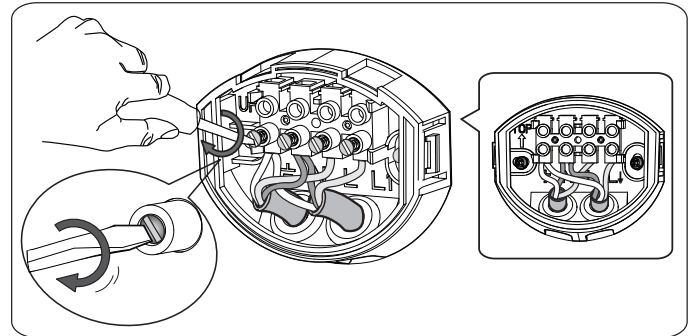
- Mount the corner bracket (optional).



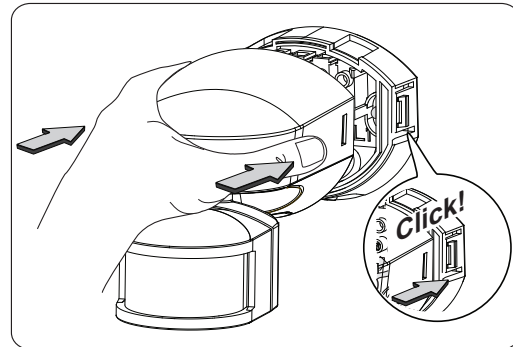
- Feed cable through the seal of the base.
- Tighten screws.



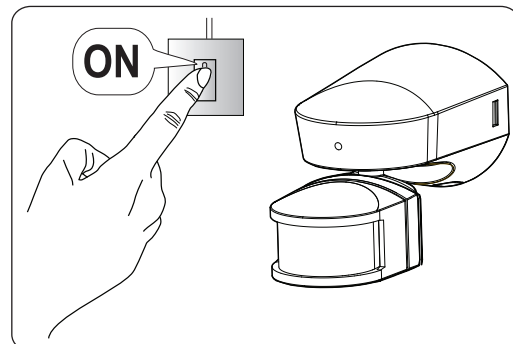
- Connect the individual wires to the appropriate terminal.
- Tighten screws.



- Plug motion detector into base and engage.

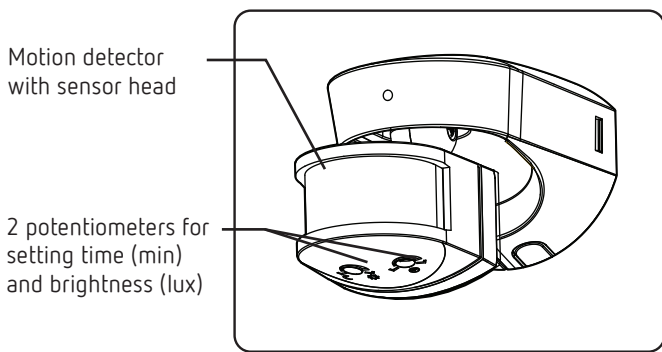


- Connect motion detector to power supply.



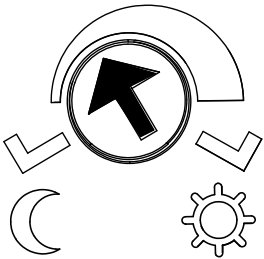
ⓘ The device needs 45 seconds of preheating time.

5. Description



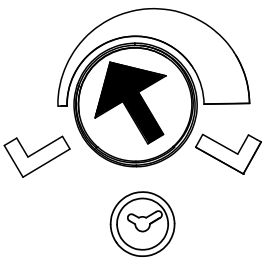
6. Setting

Setting the brightness (LUX)



- ▶ Turn the potentiometer towards „Moon“; the motion detector only switches on when it is relatively dark.
- ▶ Turn the potentiometer towards „Sun“; the motion detector switches on when it is relatively bright.
- ▶ Turn the potentiometer to „Sun“, and the device works independent of brightness.

Setting the time (min.)

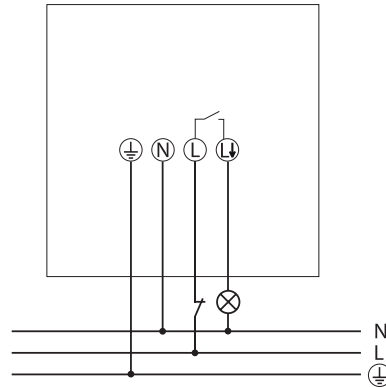


- ▶ Set the potentiometer to the desired time (5 s - 15 min.).

Manual operation

The lighting can be manually switched on/off via a circuit breaker button.

- ⓘ The lighting must have been switched on by the motion detector, in order to use this function!
- ⓘ A circuit breaker button must be connected.

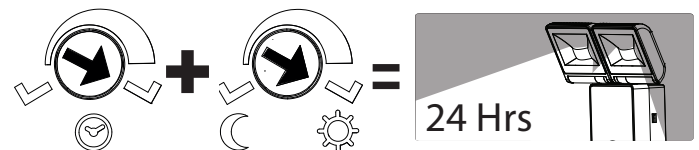


- ▶ Activate the motion detector (lighting on).
- ▶ Shortly press the circuit breaker button (max. 1.5 s).
→ The lighting remains switched on for 6 hours. Afterwards, the automatic mode will be switched on.
- ▶ In order to switch off the lighting, shortly press the circuit breaker button (max. 1.5 s).

Setting the twilight switch function

- ▶ Turn the time potentiometer (min.) clockwise up to the stop.
→ The twilight switch function is activated.
- ⓘ Now, the motion detector does not respond to movements anymore.
- ⓘ The connected spotlight switches on at the set surrounding brightness.

⚠ CAUTION!



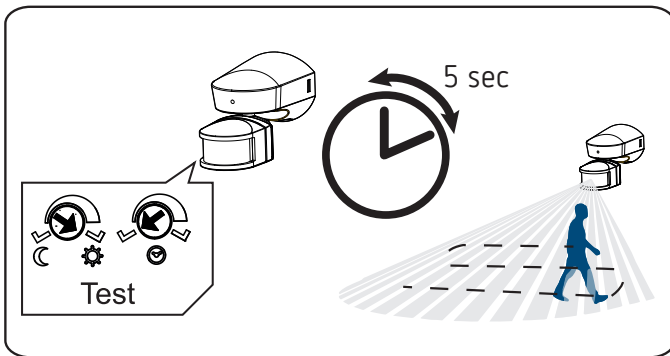
7. Walking test and alignment

Performing the walking test

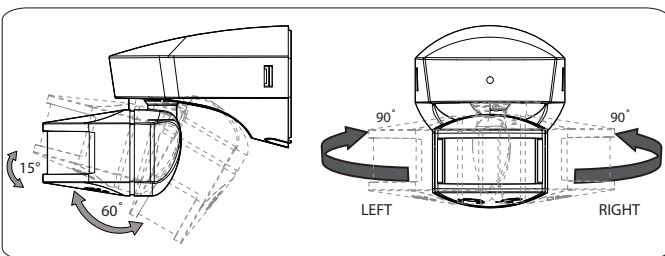
The walking test is used to test the detection area and to restrict it if necessary.

- Turn the time potentiometer (min.) counterclockwise up to the stop.
 - The motion detector now always reacts to movements (independent of brightness).
- Turn the brightness potentiometer (lux) clockwise up to the stop.
- Walk through the detection area at a right angle. After the motion detector has detected a movement, it switches on for 5 s.

① Pay attention to the direction of motion during the test.



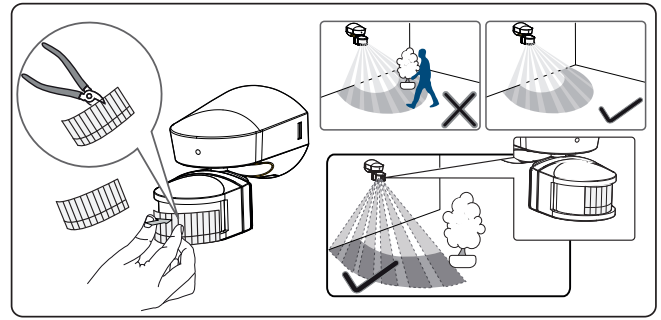
Aligning the motion detector



- The motion detector can be rotated up by 15 ° and down by 60 °.
- The motion detector can be rotated to the left/right and down by 90 °.

Limiting the detection area

- Use the supplied stickers to adjust the motion detector to the desired detection area.
- Remove the required section of the sticker by using scissors.
- Then place it on the lens.



8. Technical data

Operating voltage:	230 V AC +10 % / -15 %
Frequency:	50 Hz
Standby:	< 1 W
Switching capacity:	10 A (at 230 V AC, cos φ = 1)
Min. switching capacity:	10 mA
Switch contact:	μ contact 230 V AC
Protection rating:	IP 55 (EN 60529)
Protection class:	II
Operating temperature:	-20 °C ... +40 °C
Brightness setting range:	5 – 1000 lx
Duty cycle range:	5 s – 15 min
Detection angle:	180°/90°
Detection area:	lateral: max. 12 m, frontal: max. 3 m
Installation height:	2 - 4 m
Sensor head rotatable right/left:	90°
Sensor head rotatable down/up:	60° / 15°
Incandescent/halogen lamp load	2300 W
Low-voltage halogen lamps (transformer):	2300 VA
Fluorescent lamps (VVG) uncompensated:	400 VA
Fluorescent lamps (VVG) series compensated:	400 VA
Fluorescent lamps (LLB) parallel compensated:	350 W (37 μF)
Fluorescent lamps (EVG):	300 W
Compact fluorescent lamps (EVG):	80 W
LED lamps < 2 W:	50 W
LED lamps > 2 W:	250 W

9. Contact

Theben AG
 Hohenbergstr. 32
 72401 Haigerloch
 GERMANY
 Phone +49 7474 692-0
 Fax +49 7474 692-150

Hotline
 Phone +49 7474 692-369
 hotline@theben.de
Addresses, telephone numbers, etc.
 www.theben.de